



Diesel Generating Sets  
200 kVA -1010 kVA



GENSET HELPLINE  
1800 3010 8321



Over 100 years, Baudouin has been manufacturing the highest quality engines for marine, power generation and a host of other applications. The continuous need to provide **durable, robust and long lasting engines for land – based power generation and the high-sea** have led to Baudouin being the preferred engine supplier to the most prominent generator manufacturers in the world.

The Baudouin range of G Drive engines are available from 7.5 kVA to 2500 kVA and are **manufactured, distributed and serviced by SHIG** India based at Pune, Maharashtra.



Casis, France - Since 1918



Pune, India



Pune, India

## Acoustic Enclosure

Our Silent Gensets use India's No. 1 Steel in our gensets by **TATA STEEL**

- Aesthetically designed weather and sound resistant enclosure.
- Designed for ease of Access and Serviceability.
- Acoustic Enclosures come with UV resistant powder coating which can withstand extreme weather conditions.
- Smallest footprint giving an edge to optimise your valuable space.
- Ease of handling with appropriately located Center / single lifting arrangement and Forklift slots for easy shifting.
- Silencer placed suitably outside the Acoustic Enclosure.
- Practically located fuel filling point.
- **Rishabh** Silent Genset come with India's No. 1 Sheela foam (makers of Sleepwell mattress)
- Certified for stringent and latest MOEF / CPCB II norms of less than 75 dB at 1 meter.
- Super Silent models for special applications which have 68-70 dB sound label at 1 metre in open field conditions.
- The form used in fire retardant enclosure.

## Genset Controller / Switchgear Equipment

Our Generators come with World's No. 1 controllers from **WOODWARD**

- Fault recognition by name unlike other controller with display fault code.
- Microprocessor based.
- Brilliant LCD screen.
- Lowest battery consumption in idle condition.
- Manual breaker operation with tactile button on Front panel
- IP 65 protection against water seepage.



- World class DG set monitoring and protection features.
- Availability with Automatic and Manual functions on demand.
- **Rishabh** Generators come with World's No. 1 Switchgear from Schneider Electric.

TECHNICAL SPECIFICATIONS											
DG SET	DG Set Model	RB-200	RB-250	RB-320	RB-400	RB-500	RB-625	RB-750	RB-810	RB-1010	
	Rating (kVA)	200	250	320	400	500	625	750	810	1010	
	Rating (kW)	160	200	256	320	400	500	600	648	808	
	Starting System	24 V									
	Battery (Ah)	150					150				
	Canopy Size : LxBxH (mm)	4500x1600x2050	4500x1600x2050	5000x2000x2400	5500x2000x2400	5600x2000x2800	5600x2000x2800	7050x2550x2950	7050x2550x2950	8000x2850x3650	
	Weight (Kg)	3700	3700	3900	4200	6150	6650	8300	8300	9400	
	Fuel Consumption @ 75% Load (Ltrs/hr)	33.5	41.2	51.3	63.5	79	92.6	129.5	129.5	153.8	
Fuel Tank Capacity (Ltrs)	500					990					
ENGINE	Engine Model	6M12G6D2/5	6M12G6D2/5	6M19G320/5E3	6M21G440/5E3	6M21G500/5E3	6M21G500/5E3	6M33D660E310	6M33D660E310	12M26D968E200	
	Engine Make	BAUDOUIN									
	Engine Power (Bhp)	326.3	326.3	406.5	496.2	603	737.6	883.85	883.85	1180.1	
	Rated Speed (RPM)	1500									
	No. of Cylinders	6 inline	6 inline	6 inline	6 inline	6 inline	8, Vee	6 inline	6 inline	12, Vee	
	Bore (mm)	108	108	126	127	127	127	150	150	150	
	Stroke (mm)	136	136	155	165	165	165	185	185	150	
	Total Displacement (CC)	7470	7470	11596	12540	12540	16720	19600	19600	31800	
	Lube oil Sump Capacity (Ltrs)	24	24	30	30	30	44	61	61	109	
	Total Coolant Capacity (Ltrs)	32	32	62	55	55	71	159	159	225	
	Oil Change Period	500 Hrs Or 6 Months Which Ever Is Earlier									
	Compression Ratio	17.5:1	17.5:1	17:01	16:01			15:01			
	Aspiration	Turbo Charged									
	Cooling System	Water/Coolant									
	Flywheel Housing/Flywheel	SAE3/SAE10									
	Fuel System										
	Injection pump type	HPCR	HPCR	Mechanical	HPCR	HPCR	HPCR	HPCR	HPCR	HPCR	Mechanical
Governor method	ECU	ECU	Electronic	ECU	ECU	ECU	ECU	ECU	ECU	Electronic	
Governing Class	G3	G3	G2	G3	G3	G3	G3	G3	G3	G2	
Emission Norms	CPCB-II Compliant										
ALTERNATOR	Alternator Make	STAMFORD									
	Type	Brushless, H Class Insulation									
	Frequency (Hz)	50/60									
	Voltage (V)	415   230									
	Winding	2/3rd pitch winding									
	Amperes (A) @ 415 V	278	347.5	444.8	556	695	868.75	1042.5	1126	1404	
	Power Factor	0.8									
CONTROLLER	Controller Make	WoodWard 1600									
	Type	Microprocessor Based, LCD fault display screen, Auto start / Stop Features									
	Display Parameters	Run Time Hours, Current, Voltage, Engine RPM, Frequency, Engine Temperature & Oil Pressure, Battery V, Service Due Hours, kVA, PF, KW, KWH									
	Modes Available	Automatic/ Semi Automatic									
	DG Protections	Under/Over Frequency, Current Unbalance, Over Speed, Overload, RWL, LLOP, HWT, LFL, Charging									
MCB/MCCB	SCHNEIDER										

Page 1

Fuel consumption data is based on diesel specific gravity of 0.869 and conforming to IS: 1460. Fuel consumption tolerance is +5% with the condition is none of the phases exceed its rated current

## ENGINE

- **Maximum Power:** The engine have the highest break Horsepower (BHP) & Highest Cubic capacity (CC) in its class.
- **Environment Friendly:** The engines confirm to CPCB-2 India norms having lowest emissions.
- **Global Engines Manufactured in India:** engines are truly world class and are used by DGSET Manufactures


## A/C GENERATOR / ALTERNATOR

Salient Features of **STAMFORD** Alternators By Cummins Generator Technologies Ltd:

- Best in class Efficiency.
- 2/3 pitch winding alternator for better handling of harmonic and unbalanced load.
- Brushless Type and class H insulation.
- Self- excited, self -regulated Single Bearing, Brushless and Continuous Duty.
- Protection Degree IP21/IP23.



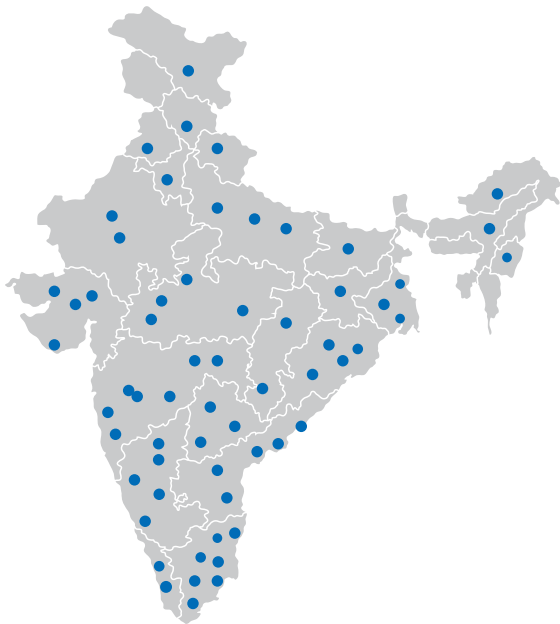
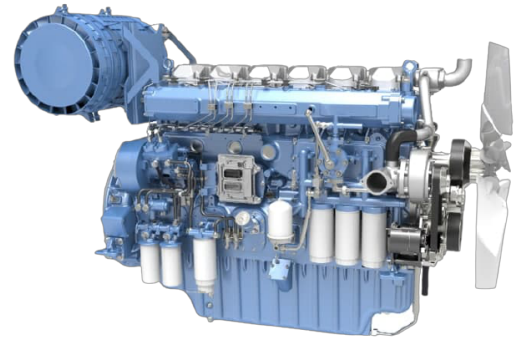
# CUSTOMER BENEFIT

World Class Diesel Engine |  **Baudouin**

World's  
India's  
World's  
India's  
India's  
India's  
World's  
World's

**NUMBER ONE**

AC Generator | **STAMFORD**  
Steel for Acoustics | **TATA STEEL**  
Genset Controllers | **WOODWARD**  
Foam for Acoustics | **Sheela**  
Lead Acid Battery | **EXIDE BATTERIES**  
A.V.M Pads | **POLYBOND**  
Switchgear | **Schneider Electric**  
Paint | **AkzoNobel**



## Rishabh India service support

**Rishabh** in India has single window solution for sales and after-market support that ensures attention to our esteemed clientele at the shortest possible time.

This concept ensures that customer support regarding engines, aggregates or complete equipment is resolved through a single window.

Our dealerships are equipped with necessary tools and equipment's and have trained and motivated service team to handle and resolve troubleshooting round the clock.



Genuine parts and tools



Service Support



Skill Development



Robust Built

## Industries we serve



Shopping Mall & Commercial Buildings



Residential Realty



Hotels, Resorts & Restaurants



Airport



Warehouse & Cold Storage



Hospitals & Critical Health Care Centres



Infra projects



Data Centre



Industrial Application



MANUFACTURED BY:

AUTHORIZED GOEM |  **Baudouin**

**RISHABH ENGINEERING CO.**

217 RICHPALPURI OPP. HAPUR MORH

G.T. ROAD GHAZIABAD, DELHI NCR - 201001 INDIA

**Only For Proof Checking & Not For External Circulation**

PG/RT/031/S200-1010 KVA/REC/APR 2021/2022



USE OF THIS MATERIAL FOR REPRODUCTION ON THE INTERNET AND WORLD WIDE WEB IS STRICTLY PROHIBITED WITHOUT WRITTEN PERMISSION FROM RISHABH ENGINEERING CO.

Dealer Stamp

